

# **REMOTE DESKTOP DRIVE MAPPING**

REVISED: March 18, 2015

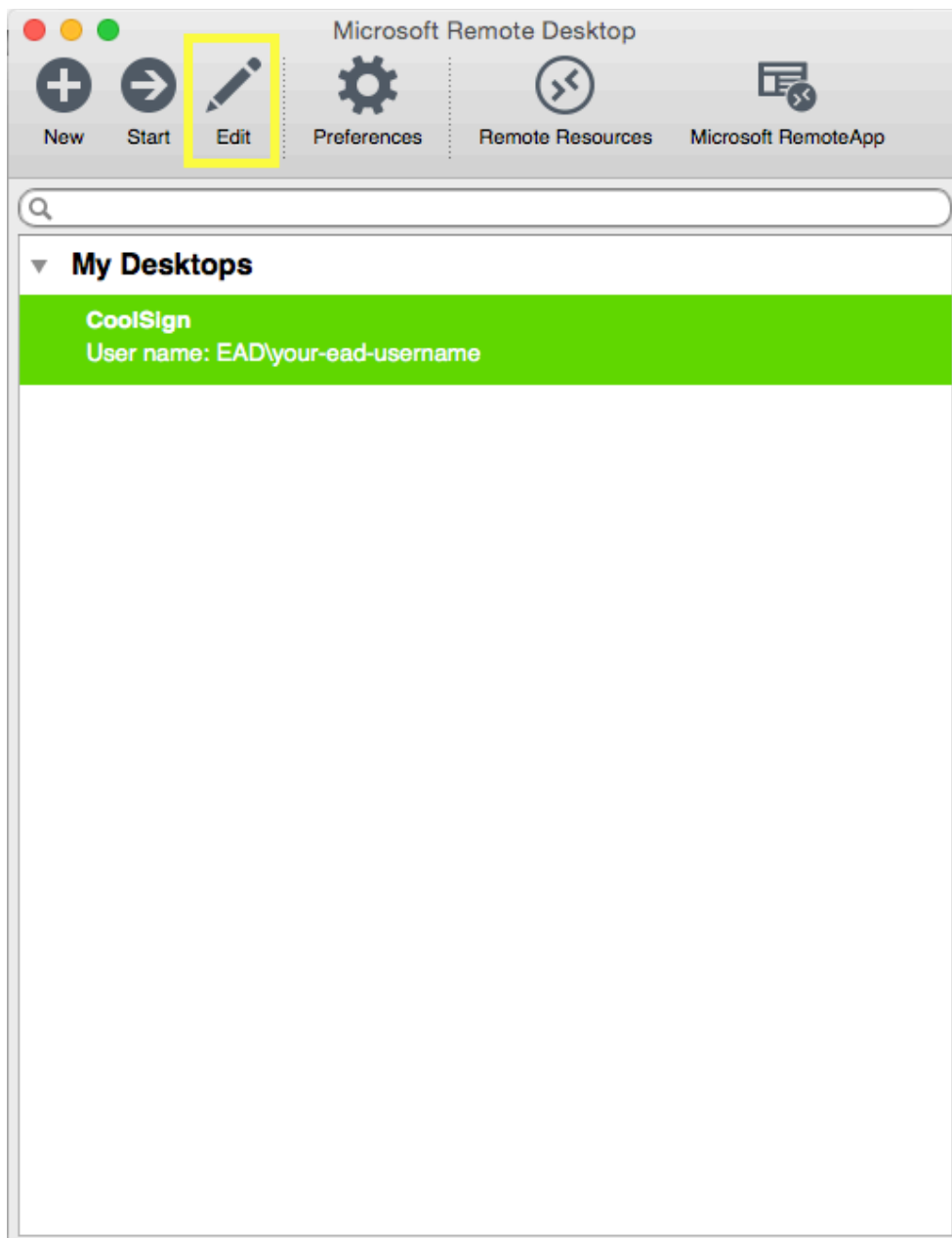
## **Content Summary:**

- |                                 |            |
|---------------------------------|------------|
| <b>I. Drive Mapping for Mac</b> | <b>p.3</b> |
| <b>II. Drive Mapping for PC</b> | <b>p.8</b> |

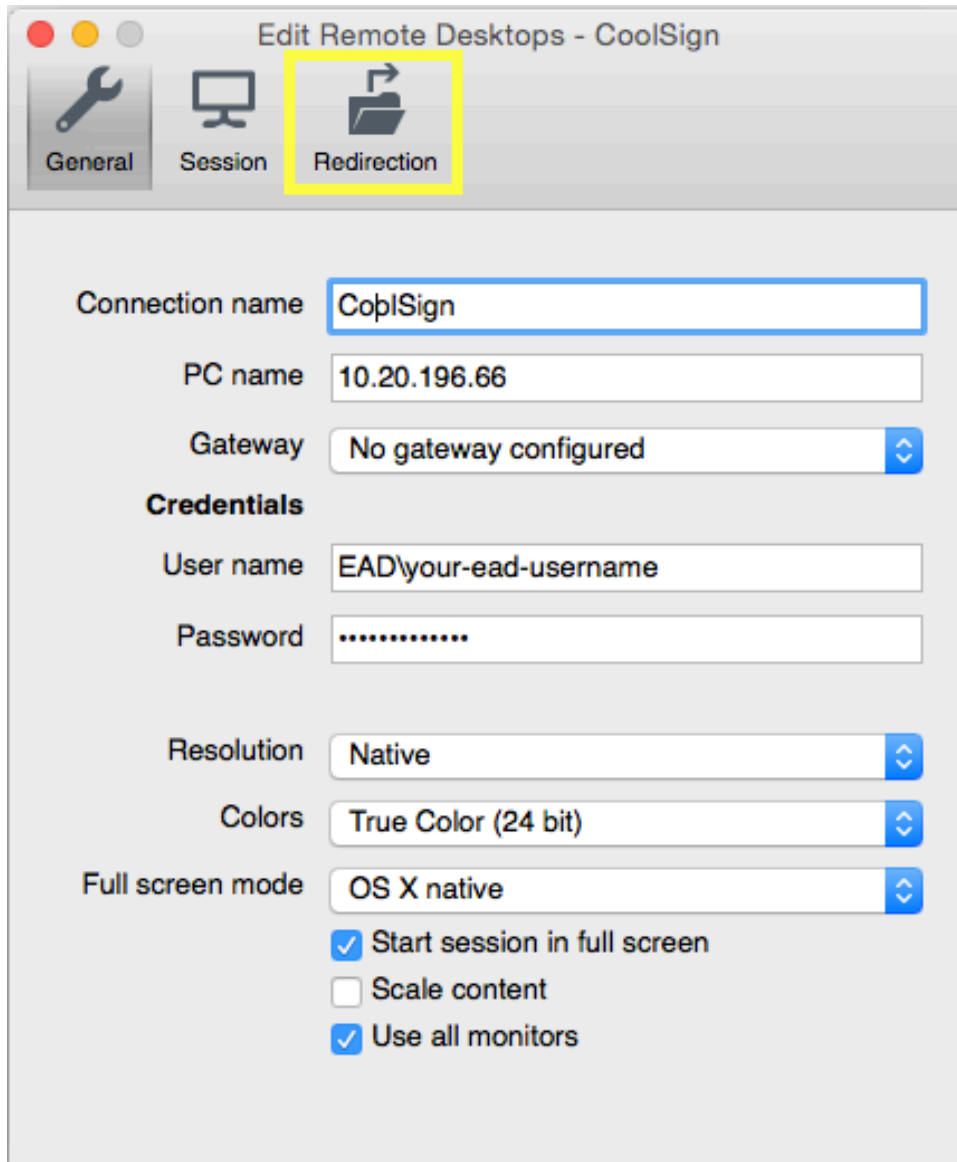
# Remote Desktop Drive Mapping

## I. Drive Mapping for Mac

1. Open Microsoft Remote Desktop
  - Highlight your CoolSign desktop and click "Edit"



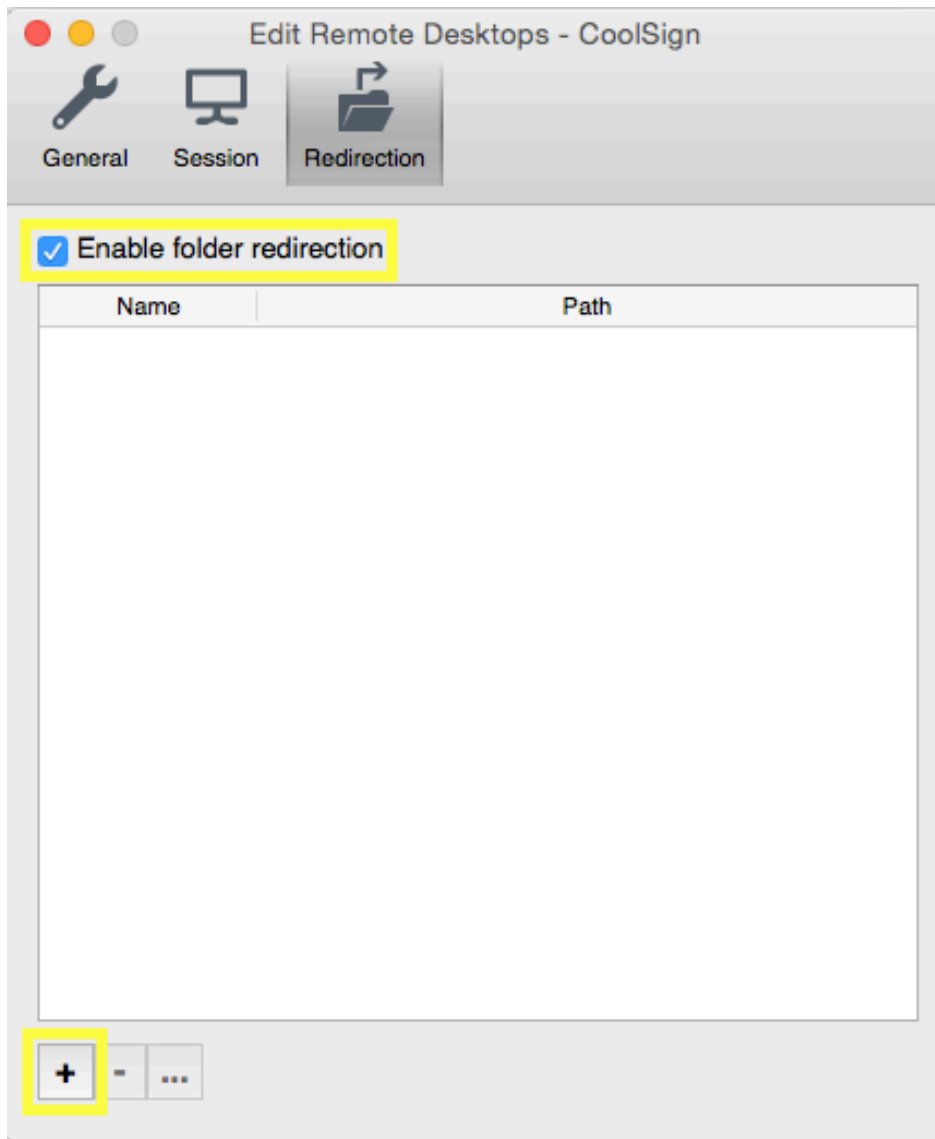
Remote Desktop Drive Mapping  
2. Click on "Redirection"



## Remote Desktop Drive Mapping

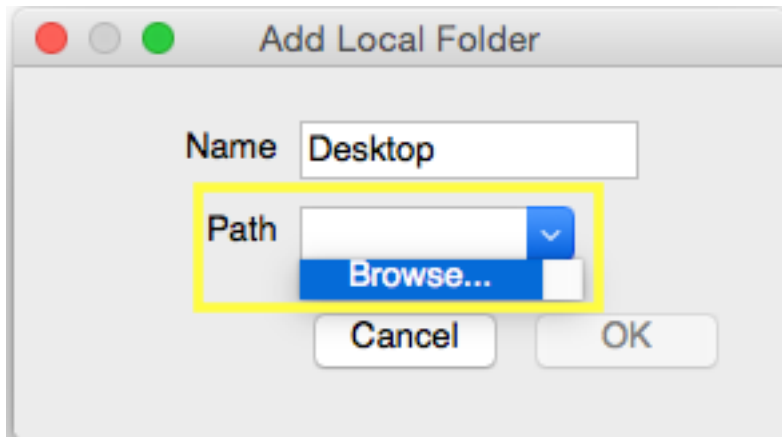
5

3. Ensure that “Enable folder redirection” is checked and click on the “+” button

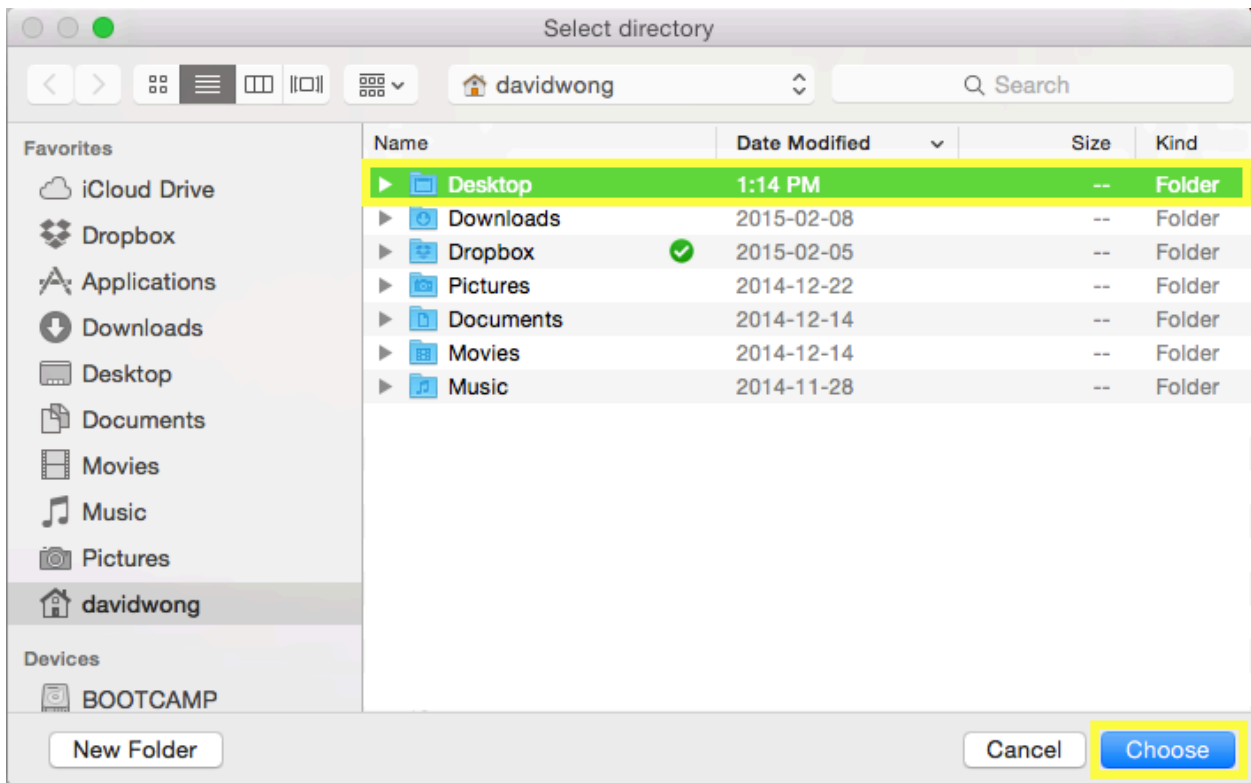


4. Name your folder and select “Path” and click “Browse...”

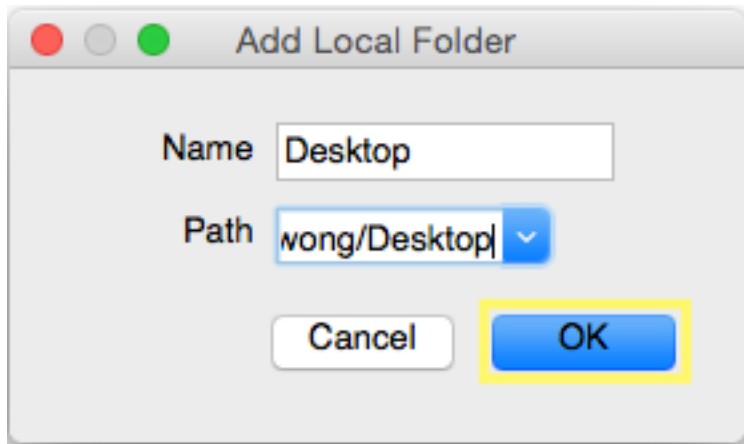
- This should bring up your computer directory



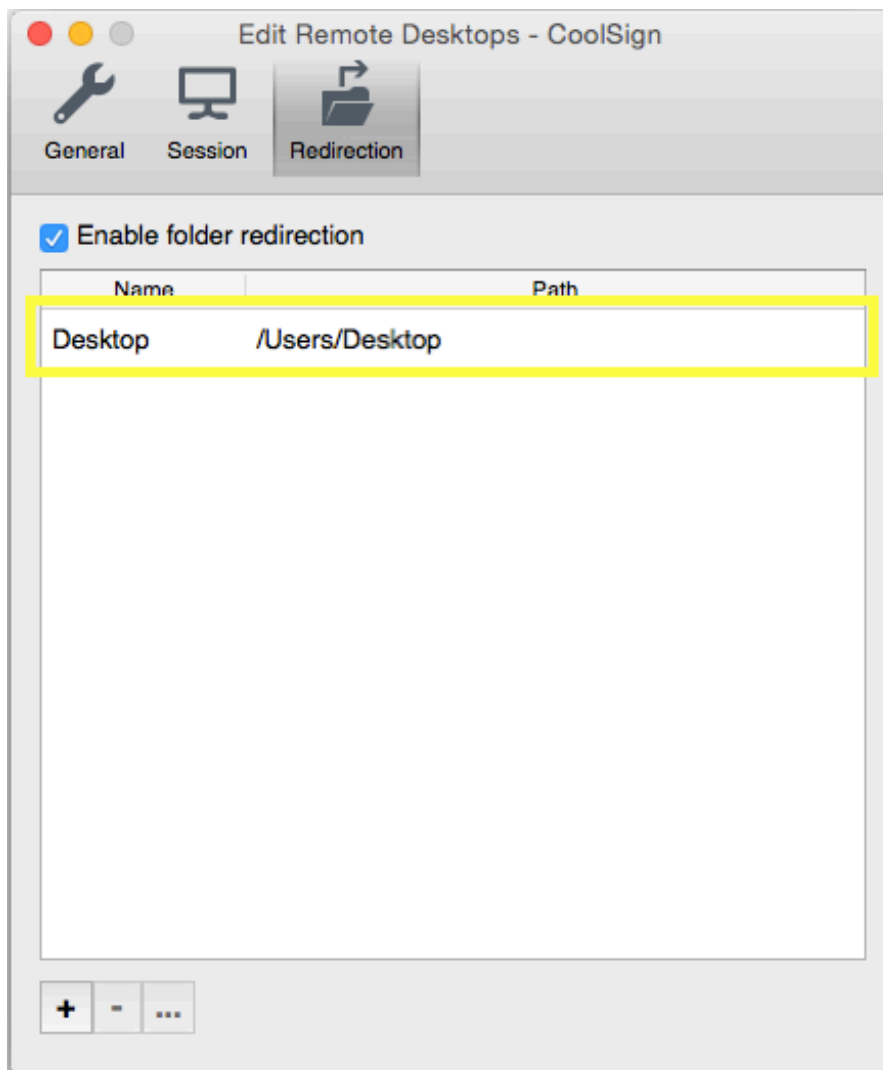
5. Select the directory you want mapped to your remote desktop (eg. Desktop) and click “Choose”



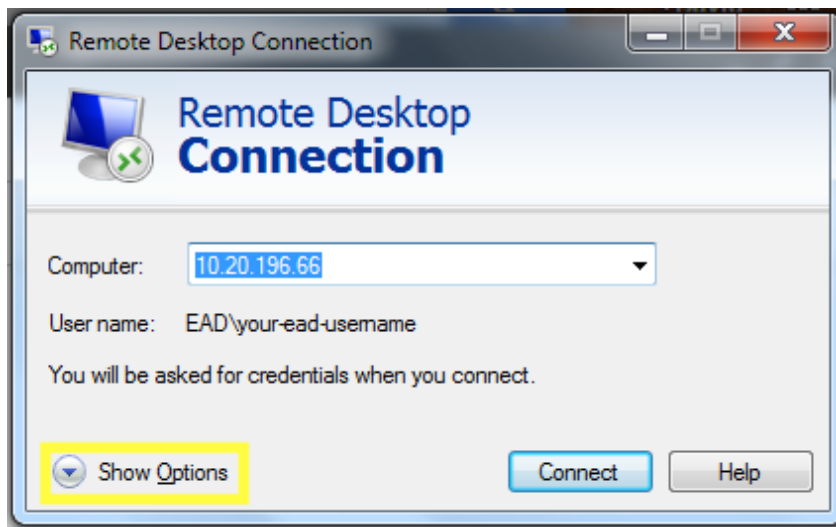
6. Click "OK"



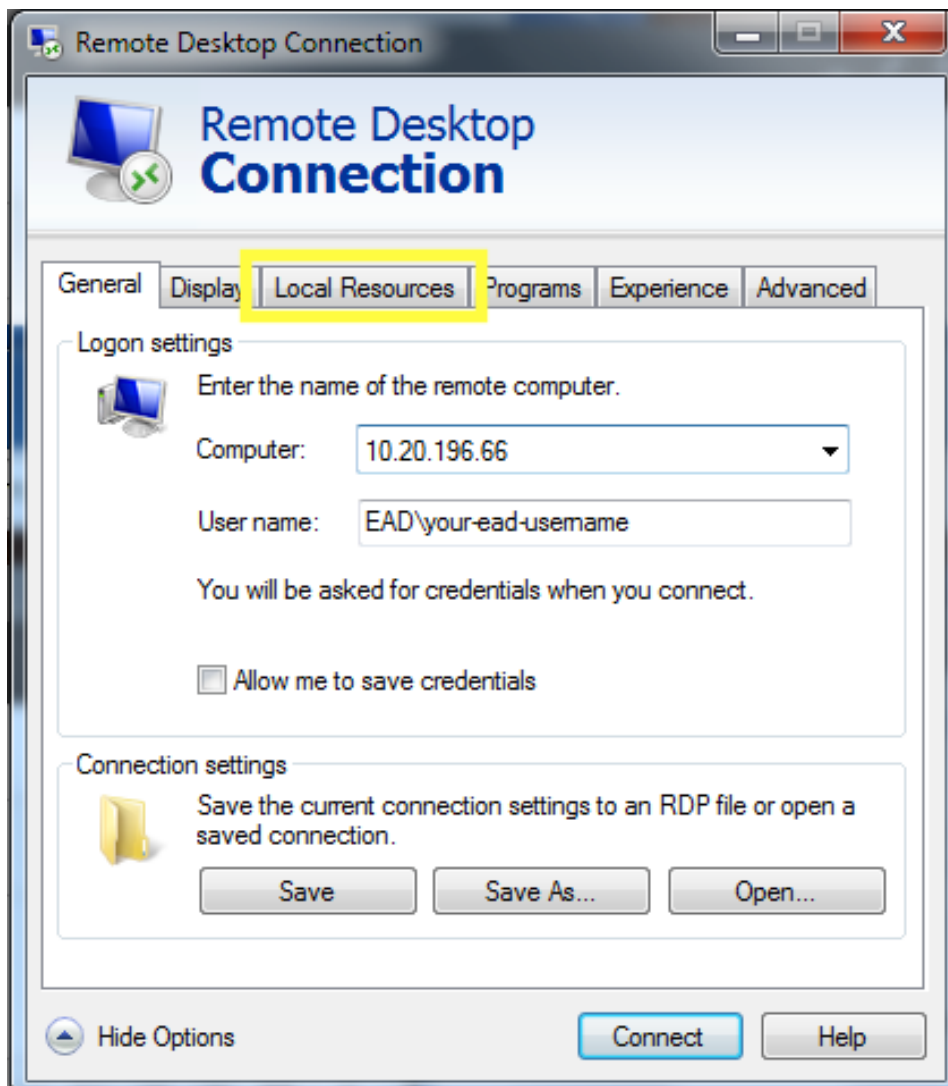
7. You should now see the path of your drive mapped to remote desktop



1. Open Microsoft Remote Desktop & click on “Show Options”

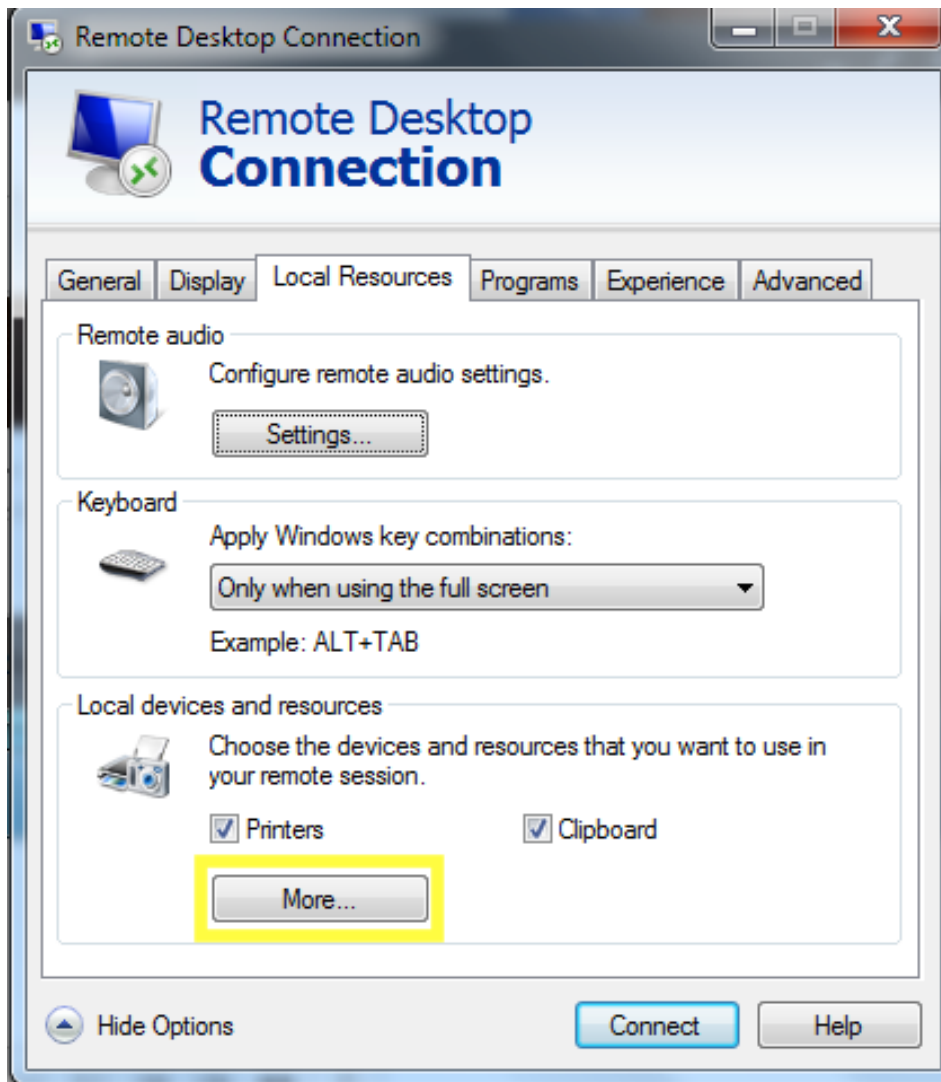


2. Click on “Local Resources” tab



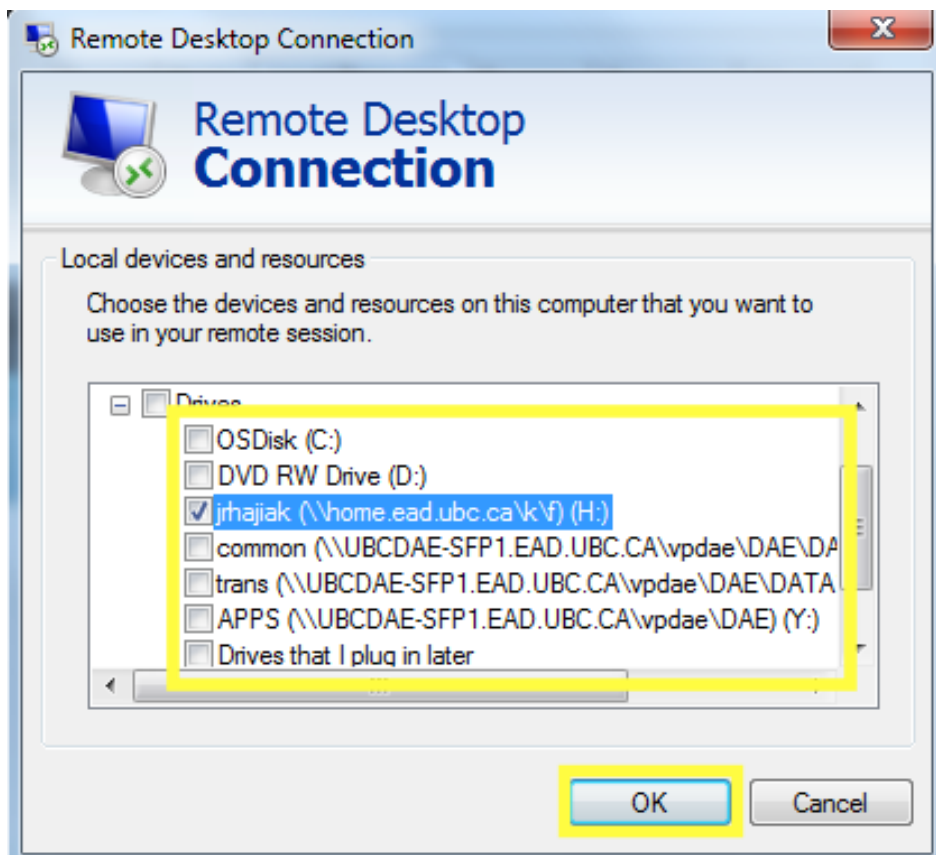
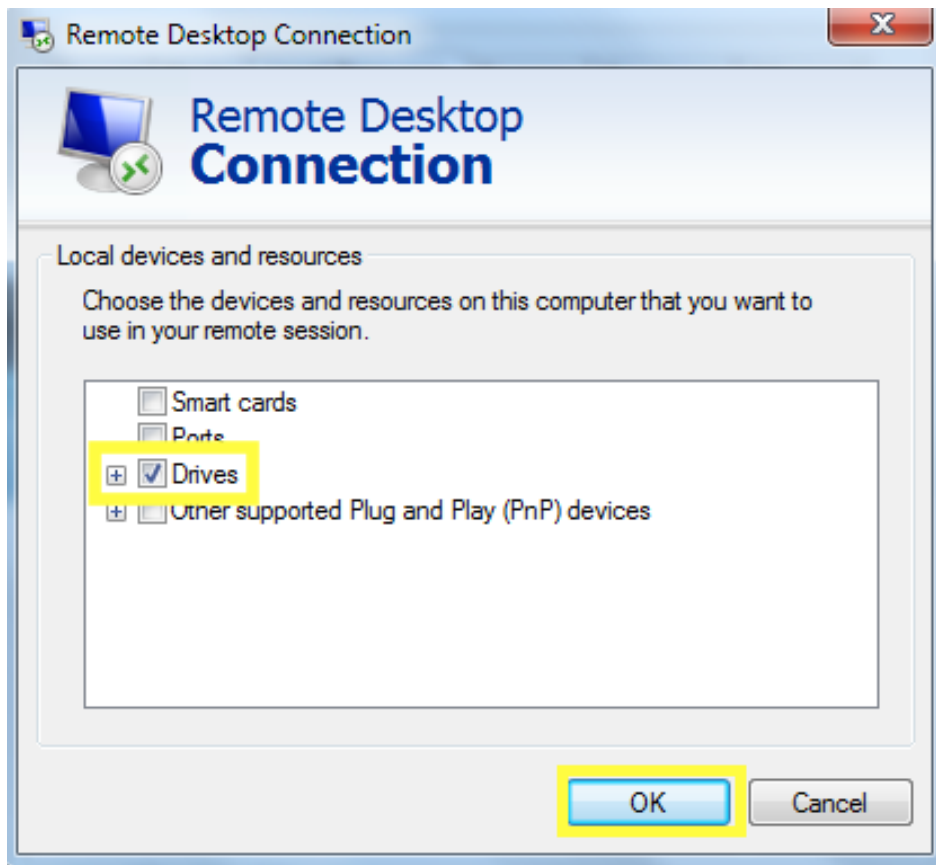


3. Click on "More"



4. To map ALL drives, make ensure “Drives” is checked and click OK

- Alternatively, you may map only specific drives by expanding the list, click “+”



5. Your drive should now be mapped to your remote desktop, connect as per usual

